



EMERGE™ SERIES



Door Styles & Finishes

KEMPER®

EMERGE™ SERIES

Masterful craftsmanship.
Handsome color.™

Details matter. So does product integrity.
Build a look that tells your story authentically
with the substantial color offering and
cultivated door constructions of the
Kemper® Emerge™ Series.



Door Styles

- Ⓐ ALDER
- Ⓒ CHERRY
- Ⓜ MAPLE
- Ⓚ QUARTERSAWN OAK
- Ⓡ RUSTIC ALDER
- Ⓜ WALNUT
- Ⓜ MDF

*Additional drawer front options are available. Ask your designer for details.



Burke
Full Overlay
5-Piece Drawer Front
ⒶⒸⓂⓇⓀⓂ



Burke
Full Overlay
Slab Drawer Front
ⒶⒸⓂⓇⓀⓂ



Burke
Inset*
Slab Drawer Front
ⒶⒸⓂⓇⓀⓂ



Burke
Beaded Inset*
Slab Drawer Front
ⒶⒸⓂⓇⓀⓂ



Gordon
Full Overlay
5-Piece Drawer Front
ⒶⒸⓂⓇⓀⓂ



Gordon
Full Overlay
Slab Drawer Front
ⒶⒸⓂⓇⓀⓂ



Gordon
Inset*
Slab Drawer Front
ⒶⒸⓂⓇⓀⓂ



Gordon
Beaded Inset*
Slab Drawer Front
ⒶⒸⓂⓇⓀⓂ



Landry
Full Overlay
5-Piece Drawer Front
ⒶⒸⓂⓇⓀⓂ



Landry
Full Overlay
Slab Drawer Front
ⒶⒸⓂⓇⓀⓂ



Landry
Inset*
Slab Drawer Front
ⒶⒸⓂⓇⓀⓂ



Landry
Beaded Inset*
Slab Drawer Front
ⒶⒸⓂⓇⓀⓂ



Decker
Full Overlay
5-Piece Drawer Front
ⒶⒸⓂⓇⓀⓂ



Decker
Full Overlay
Slab Drawer Front
ⒶⒸⓂⓇⓀⓂ



Decker
Inset*
Slab Drawer Front
ⒶⒸⓂⓇⓀⓂ



Decker
Beaded Inset*
Slab Drawer Front
ⒶⒸⓂⓇⓀⓂ



Kirby
Full Overlay
5-Piece Drawer Front
ⒶⒸⓂⓇⓀⓂ



Kirby
Full Overlay
Slab Drawer Front
ⒶⒸⓂⓇⓀⓂ



Kirby
Inset*
Slab Drawer Front
ⒶⒸⓂⓇⓀⓂ



Kirby
Beaded Inset*
Slab Drawer Front
ⒶⒸⓂⓇⓀⓂ



Tate
Full Overlay
5-Piece Drawer Front
ⒶⒸⓂⓇⓀⓂ



Tate
Full Overlay
Slab Drawer Front
ⒶⒸⓂⓇⓀⓂ



Tate
Inset*
Slab Drawer Front
ⒶⒸⓂⓇⓀⓂ



Tate
Beaded Inset*
Slab Drawer Front
ⒶⒸⓂⓇⓀⓂ

*Additional drawer front options are available. Ask your designer for details.

Also available in Choice™ Series.

- Ⓐ ALDER
- Ⓒ CHERRY
- Ⓜ MAPLE
- Ⓚ QUARTERSAWN OAK
- Ⓡ RUSTIC ALDER
- Ⓜ WALNUT
- Ⓛ MDF



Vinson
Full Overlay
5-Piece Drawer Front
ⒶⒸⓂⓇⓇⓂ



Vinson
Full Overlay
Slab Drawer Front
ⒶⒸⓂⓇⓇⓂ



Vinson
Inset*
Slab Drawer Front
ⒶⒸⓂⓇⓇⓂ



Vinson
Beaded Inset*
Slab Drawer Front
ⒶⒸⓂⓇⓇⓂ



Shanley
Full Overlay
5-Piece Flat Drawer Front
ⒶⒸⓂⓇⓇⓂ



Shanley
Full Overlay
5-Piece Drawer Front
ⒶⒸⓂⓇⓇⓂ



Shanley
Full Overlay
Slab Drawer Front
ⒶⒸⓂⓇⓇⓂ



Shanley
Inset*
Slab Drawer Front
ⒶⒸⓂⓇⓇⓂ



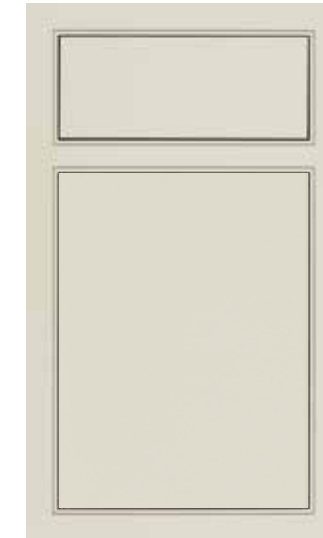
Shanley
Beaded Inset*
Slab Drawer Front
ⒶⒸⓂⓇⓇⓂ



Caprice
Full Overlay
Slab Drawer Front
ⒶⒸⓂⓇⓇⓂ Ⓛ



Caprice
Inset
Slab Drawer Front
Ⓛ



Caprice
Beaded Inset
Slab Drawer Front
Ⓛ



Butler
Full Overlay
5-Piece Drawer Front
ⒶⒸⓂⓇⓇⓂ



Butler
Full Overlay
Slab Drawer Front
ⒶⒸⓂⓇⓇⓂ



Hardin
Full Overlay
5-Piece Drawer Front
ⒶⒸⓂⓇⓇⓂ



Hardin
Full Overlay
Slab Drawer Front
ⒶⒸⓂⓇⓇⓂ



Amstead
Full Overlay
5-Piece Drawer Front
ⒶⒸⓂⓇⓇⓂ



Amstead
Full Overlay
Slab Drawer Front
ⒶⒸⓂⓇⓇⓂ



Northrope
Full Overlay
5-Piece Drawer Front
ⒶⒸⓂⓇⓇⓂ



Northrope
Full Overlay
Slab Drawer Front
ⒶⒸⓂⓇⓇⓂ



Whitman
Full Overlay
5-Piece Drawer Front
ⒶⒸⓂⓇⓇⓂ



Whitman
Full Overlay
Slab Drawer Front
ⒶⒸⓂⓇⓇⓂ



Whitman
Inset*
Slab Drawer Front
ⒶⒸⓂⓇⓇⓂ



Whitman
Beaded Inset*
Slab Drawer Front
ⒶⒸⓂⓇⓇⓂ

Paints*

Available on Maple, MDF and Quartersawn Oak.



Mindful Gray



Limestone



Cloud



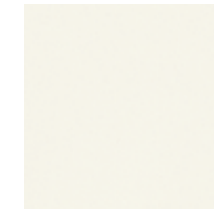
Juniper Berry



Brightest White



Sterling White



White



Westhighland White



Fleeting Green



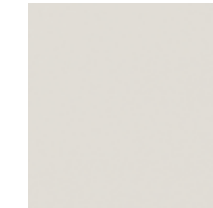
Sea Salt



Coastal Plain



Retreat



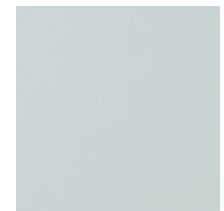
Icy Avalanche



Agreeable Gray



Coconut



North Star



Interesting Aqua



Seaside



Abyss



Dover



Egret



Serious Gray



Distance



Maritime



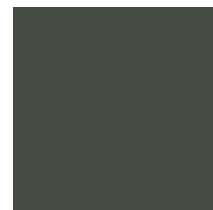
Naval



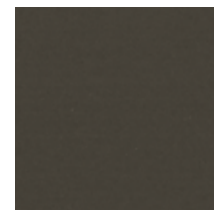
Peppercorn



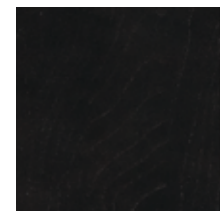
Moonstone



Foxhall Green



Forest Floor



Black

*When Maple painted finishes (Paints, Sherwin-Williams or Brushed Technique) are specified, the center panels of the selected style may be constructed of Medium Density Fiberboard (MDF). MDF provides a smoother finish when painted, and is more resistant to warping, expansion, and contraction.



SHERWIN-WILLIAMS®

Kemper Emerge Maple, MDF, and Quartersawn Oak door styles are now available in more than 2000 paint colors! With the complete palette of Sherwin-Williams paints, you'll be sure to find a color that is beyond ordinary. Layer a Penned Glaze or Brushed Finish for a true artistic interpretation. Please see your designer for details and exclusions.

Penned Glazes for Paints*

Shown on Maple Coconut, available on most paints. See your designer for details.



Meringue (M) (D) Nougat (M) (D) Toasted Almond (M) (D) Amaretto Crème (M) (D) Grey Stone (M) (D) Smoked Caviar (M) (D)

Brushed Finishes for Paints*

Shown on Maple Coconut, available on most paints. See your designer for details.



Lakeshore (M) (D) Nightfall (M) (D) Timber (M) (D)

*When Maple painted finishes (Paints, Sherwin-Williams or Brushed Technique) are specified, the center panels of the selected style may be constructed of Medium Density Fiberboard (MDF). MDF provides a smoother finish when painted, and is more resistant to warping, expansion, and contraction.

Stains with Penned Glazes

Shown on Maple. Available on species as indicated.

In the penned glaze process, the glaze material is hand-applied to only the highlighted areas.



Natural Toasted Almond (A) (C) (M) (R) (W) Natural Amaretto Crème (A) (C) (M) (R) (W)

Stains

Shown on Maple, available on species as indicated.

(A) ALDER (Q) QUARTERSAWN OAK (D) MDF
(C) CHERRY (R) RUSTIC ALDER
(M) MAPLE (W) WALNUT



Natural (A) (C) (M) (R) (Q) (W) Sandpiper (A) (C) (M) (R) (Q) (W) Sahara (A) (C) (M) (R) (Q) (W) Single Malt (A) (C) (M) (R) (Q) (W) Cattail (A) (C) (M) (R) (Q) (W)
Boardwalk (A) (C) (M) (R) (Q) (W) Buckskin (A) (C) (M) (R) (Q) (W) Morel (A) (C) (M) (R) (Q) (W) Mustang (A) (C) (R) (W) Havana (A) (C) (M) (R) (Q) (W)
Seal (A) (C) (R) (Q) (W) Colt (A) (C) (M) (R) (Q) (W) Boulder (A) (C) (M) (R) (Q) (W) **NEW** Titanium (A) (C) (M) (R) (Q) (W) Thatch (A) (C) (M) (R) (Q) (W)
Marsala (A) (C) (R) (W) Tundra (A) (C) (M) (R) (Q) (W) Rodeo (A) (C) (M) (R) (Q) (W) Chocolate (A) (C) (M) (R) (Q) (W) Stout (A) (C) (M) (R) (Q) (W)

Stains with Flooded Glazes

Available on species as indicated. In the flooded glaze process, the glaze material is sprayed onto the entire cabinet door and is then wiped off everywhere except in the highlighted areas.

















Natural Toasted Almond (A) (C) (M) (R) (W) Sandpiper Amaretto Crème (A) (C) (R) (W) Marsala Amaretto Crème (A) (C) (R) (Q) (W)

Specialty Finishes

Shown on Maple. Available on species as indicated.

- (A) ALDER
- (C) CHERRY
- (M) MAPLE
- (Q) QUARTERSAWN OAK
- (R) RUSTIC ALDER
- (W) WALNUT
- (D) MDF

 Dunes (A)(C)(R)(Q)(W)	 Sparrow (A)(C)(R)(Q)(W)	 Driftwood (A)(C)(M)(R)(Q)(W)	 Thicket (A)(C)(R)(Q)(W)	 Poppyseed (M)(W)	 Armor (A)(C)(R)(Q)(W)
 Alpaca (M)(Q)(W)	 Cigar Box (A)(C)(R)(Q)(W)	 Balsamic Ombre (A)(C)(R)(W)	 Cordial Ombre (A)(C)(R)(W)	 Worn Black (M)	 Black Canyon (M)
 Worn Beachglass (M)(Q)	 Beachglass (M)(Q)				

Stains with Cerused Finishes

 Buckskin Brindle (Q)(W)	 Buckskin Roan (Q)(W)	 Morel Brindle (Q)(W)	 Morel Roan (Q)(W)	 Seal Brindle (Q)(W)	 Seal Roan (Q)(W)
------------------------------------------------------------------------------------------------------------------	----------------------------------------------------------------------------------------------------------------	----------------------------------------------------------------------------------------------------------------	-------------------------------------------------------------------------------------------------------------	-----------------------------------------------------------------------------------------------------------------	--------------------------------------------------------------------------------------------------------------

Outside Edge Door Profile Options

Every Emerge™ Series door style offers several outside edge profiles to tailor your look. It's amazing how seemingly small changes make such a drastic difference in the appearance of a door. From simple and straight to traditionally detailed, check which options are available on the styles you love and select the shape that suits your vision.

 PROFILE #10	 PROFILE #12	 PROFILE #14	 PROFILE #17
 PROFILE #18	 PROFILE #27		

Sheen Options

A choice in sheen can significantly alter the appearance of a door, especially those finished with medium to dark paints and stains where matte finishes are more noticeable. We have paired a Standard Sheen (top) with our new Matte Sheen (bottom) on this Burke Cherry Mustang door to illustrate the difference. Matte Sheen is available on all paints and standard stains.

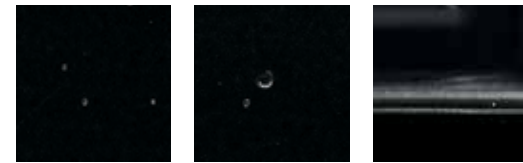


Standard Sheen v. Matte Sheen

AGING TECHNIQUES

TIMEWORN

This light distressing technique features random worm holes, tiny dents and light signs of wear to mimic the appearance of imperfections similar to those found on antiques.



Wormholes Dents Wear
Shown on painted finish



Wormholes Dents Wear
Shown on stained finish



HEWVN

This subtle technique mimics finish wear that naturally develops over time, and features a continuous but light sand-through along the sharp profiles to highlight the distinctive details of each door and drawer front. Sand-through may vary in thickness around the perimeter of a single door and throughout the entire room.



Light Sand-through
Shown on painted finish

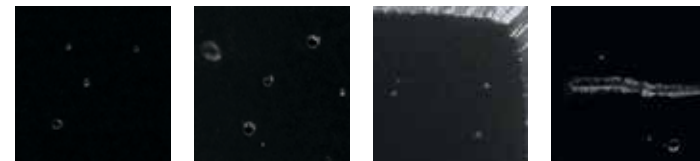


Light Sand-through
Shown on stained finish



EXTRA TIMEWORN

This more aggressive technique includes random rasped corners and edges, worm holes, mars, splits, gouges, small dings and dents for an authentically worn look.



Wormholes Dents Rasping Mars & Splits
Shown on painted finish



Wormholes Dents Rasping Mars & Splits
Shown on stained finish



EXTRA HEWVN

This more aggressive technique features burnished sand-through on corners and raised profiles along with sanding on sharp profiles to expose underlying wood for all species and colors in the Emerge line. Unlike, Hewn, Extra Hewn is a RANDOM sand-through technique varying the number of corners and raised profiles receiving burnished sand-through and the sanding of sharp profiles. As with normal aging, the worn edges will vary within individual doors and throughout the entire room.



Aggressive Sand-through
Shown on painted finish



Aggressive Sand-through
Shown on stained finish



KEMPER®

Deep Roots. High Expectations.™

 **EMERGE™ SERIES**
Premium Semi-Custom Cabinetry

 **CHOICE™ SERIES**
Semi-Custom Cabinetry

 **ECHO™ SERIES**
Value Semi-Custom Cabinetry

Styles, product availability and construction may vary slightly from those shown in this book due to material availability and/or design evolution. Specifications are subject to change without notice. Customer service is available if your design requires verification of product availability and specifications.

Product photography and illustrations have been reproduced as accurately as printing technologies permit. To ensure highest satisfaction, we strongly recommend you view an actual sample for best color, wood grain and finish representation.

Kemper® has a Limited Lifetime Warranty.
For terms and conditions, please visit: www.kempercabinets.com/warranty

Front cover image: BURKE Maple Stamped Concrete



kempercabinets.com
#KemperCabinets
© 2021 MasterBrand Cabinets, Inc. All rights reserved.